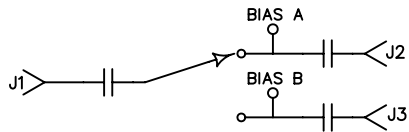


## DESCRIPTION

AMC MODEL SWN-218-2DR-STANDARD OPTION: 1024, B02 IS A 10 TO 24 GHz SINGLE POLE TWO THROW SWITCH HAVING A MAXIMUM INSERTION LOSS OF 4.5 dB AND MINIMUM ISOLATION OF 60 dB WITH A VSWR OF 2.0:1.

## SPECIFICATIONS

- FREQUENCY RANGE: ..... 10 TO 24 GHz
- INSERTION LOSS: ..... 4.5 dB MAXIMUM
- ISOLATION: ..... 60 dB MINIMUM
- VSWR: ..... 2.0:1
- SPEED: ..... RISE: 10 nSec TYPICAL, 15 nSec MAXIMUM  
FALL: 10 nSec TYPICAL, 15 nSec MAXIMUM  
DELAY ON: 75 nSec TYPICAL, 100 nSec MAXIMUM  
DELAY OFF: 75 nSec TYPICAL, 100 nSec MAXIMUM
- POWER INPUT: ..... (CW) +20 dBm (STANDARD), +10 dBm (HIGH SPEED)
- SURVIVAL POWER: ..... 1 WATT CW, 10 WATTS PEAK 1 uSec
- CONTROL: ..... TTL LOGIC "0" = J1-J2 ON, LOGIC "1" = J1-J3 ON
- POWER SUPPLY: ..... +5V @ 100 mA MAXIMUM  
-15V @ 100 mA MAXIMUM
- SIZE: ..... 1.20" (L) x 1.00" (W) x 0.50" (H)



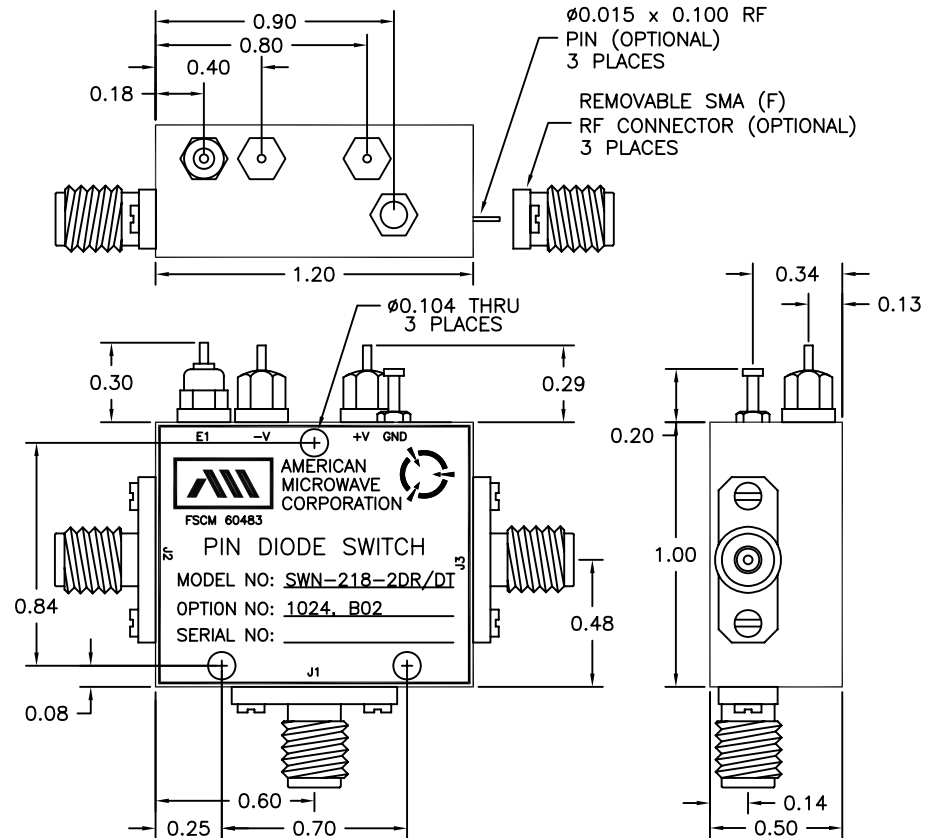
## ENVIRONMENTAL RATINGS

- **TEMPERATURE** ..... -55°C TO +85°C (OPERATING)  
-65°C TO +125°C (STORAGE)
- **HUMIDITY** ..... MIL-STD-202F, METHOD 103B COND. B
- **SHOCK** ..... MIL-STD-202F, METHOD 213B COND. B
- **VIBRATION** ..... MIL-STD-202F, METHOD 204D COND. B
- **ALTITUDE** ..... MIL-STD-202F, METHOD 105C COND. B
- **TEMPERATURE CYCLE** ..... MIL-STD-202F, METHOD 107D COND. A

NOTE: THE ABOVE SPECIFICATIONS ARE SUBJECT TO CHANGE OR REVISION

ALL DIMENSIONS ARE IN INCHES  
TOLERANCES:  
X.XX ±0.010  
X.XXX ±0.005

REVISIONS				
ZONE	REV.	DESCRIPTION	DATE	APPROVED
	-	ORIGINAL RELEASE JOB# 406134-3	07/09/04	



## AMERICAN MICROWAVE CORPORATION

7311-G GROVE ROAD  
FREDERICK, MARYLAND 21704 USA  
TEL: 301-662-4700 FAX: 301-662-4938  
WEBSITE: [www.americanmicrowavecorp.com](http://www.americanmicrowavecorp.com)  
E-MAIL: [sales@americanmicrowavecorp.com](mailto:sales@americanmicrowavecorp.com)  
ISO 9001:2000 CERTIFIED



APPROVALS		DATE	TITLE			
DRAWN <i>JDJ</i>		7/9/04	PRODUCT FEATURE SWN-218-2DR-STANDARD OPTION: 1024, B02 10-24 GHz SP2T SOLID STATE SWITCH			
CHECKED			SIZE	FSCM NO.	DWG NO.	REV.
ISSUED			A	60483	100-7039	-
			SCALE	N:S		SHEET
					1 OF 3	